

The Alpine Meadows Road Bridge Replacement Project Update

PREPARED BY
County of Placer
Department of Public Works

June 13 2013



Project Update

- ❖ Brief Project History
- ❖ Current Status
- ❖ Project Details
 - ✓ Project Limits
 - ✓ Bridge Renderings
 - ✓ Construction Info
 - ✓ Intersection Plans
- ❖ Project Schedule
- ❖ Q&A



COUNTY OF PLACER

Department of Public Works

ALPINE MEADOWS ROAD BRIDGE PROJECT



Project History

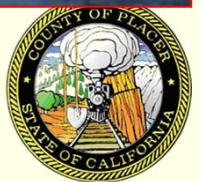


Project funded by Federal Highway Bridge Program

COUNTY OF PLACER

ALPINE MEADOWS ROAD BRIDGE PROJECT

Department of Public Works



Current Status

❖ Preliminary Design

Preliminary Bridge / Intersection Design: **Complete**

Roundabout Study: **Complete**

30 % Design: **Complete**

❖ Environmental Clearance

PES: **Complete**

Cultural Resource Studies: **Complete**

Biological Studies: **Draft Complete - USFWS**

California Environmental Quality Act (CEQA): **Complete**

National Environmental Study Act (NEPA) CE: **Complete**



Current Status Cont.

❖ Final Design

65% Design: **Complete**

95% Design: **In Progress**

Utility Coordination: **In Progress**

❖ Permitting

LRWQCB: **Complete**

Army Corp of Engineers 404 permit: **Complete**

DFG Streambed Alteration Permit: **Complete**

❖ Right of Way (ROW)

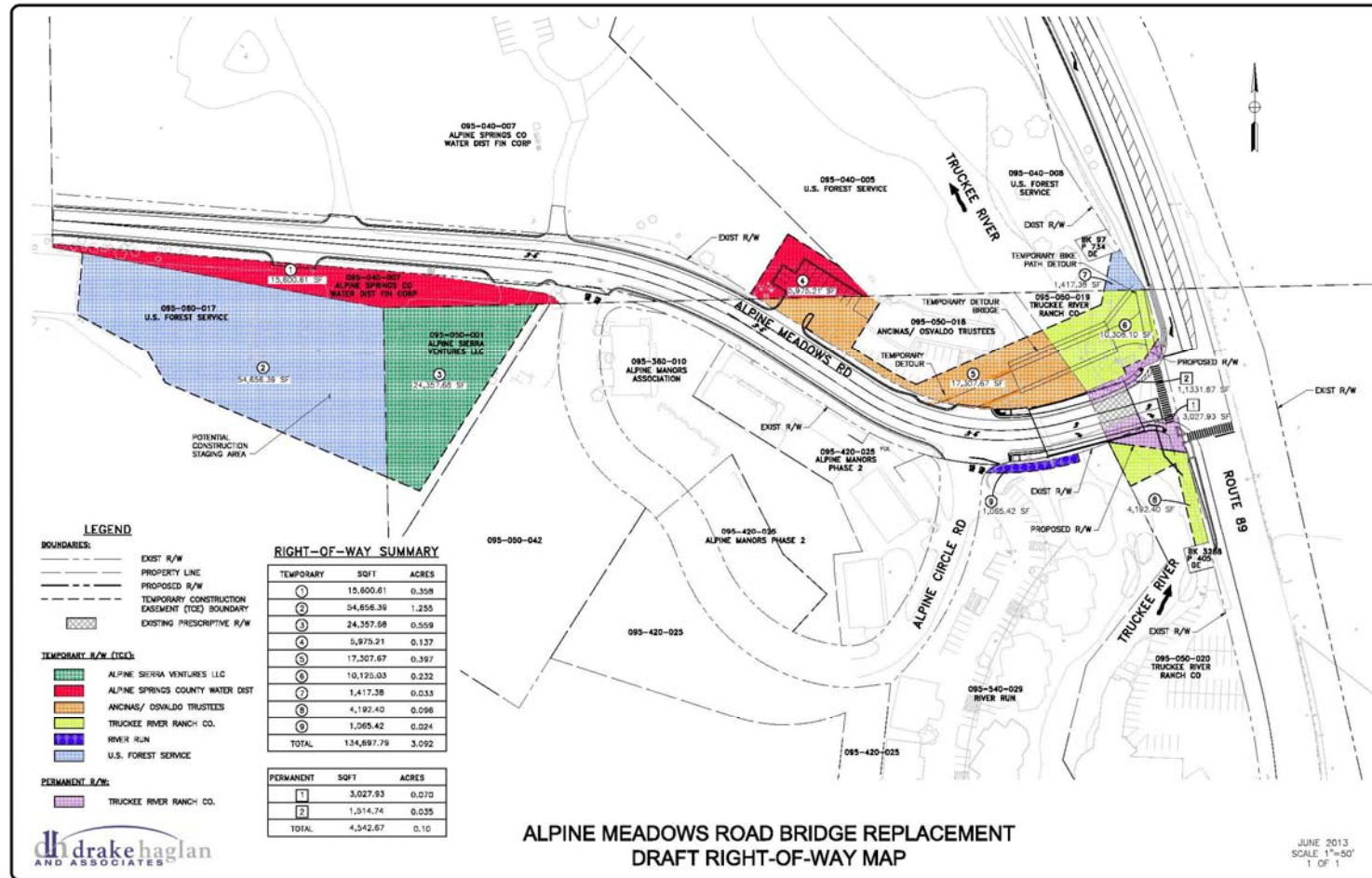
ROW negotiations:

Temporary Construction Easements: **In Progress**

Permanent Easements: **Complete**



Right of Way Map



COUNTY OF PLACER

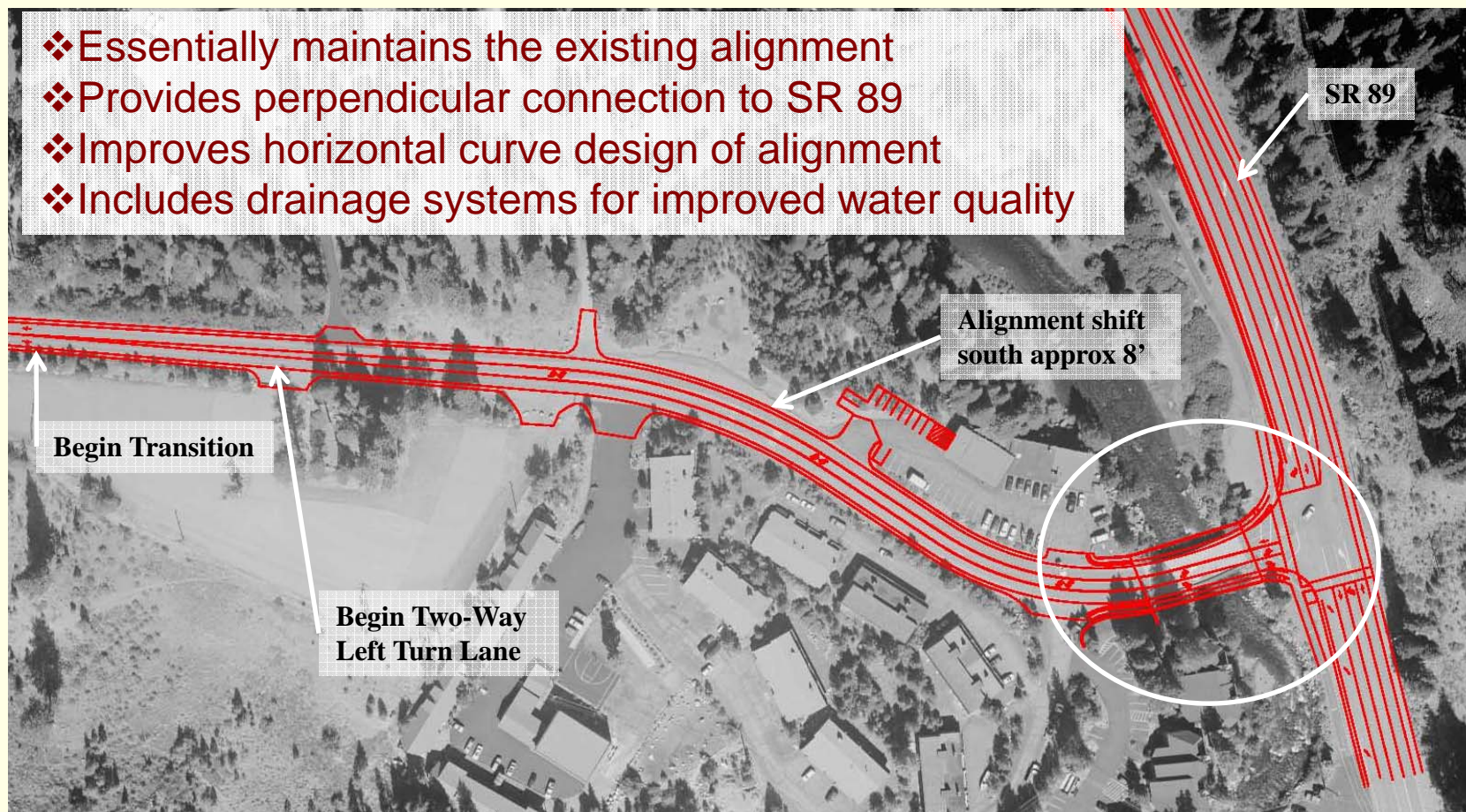
Department of Public Works



Project Details

Proposed Alignment

- ❖ Essentially maintains the existing alignment
- ❖ Provides perpendicular connection to SR 89
- ❖ Improves horizontal curve design of alignment
- ❖ Includes drainage systems for improved water quality



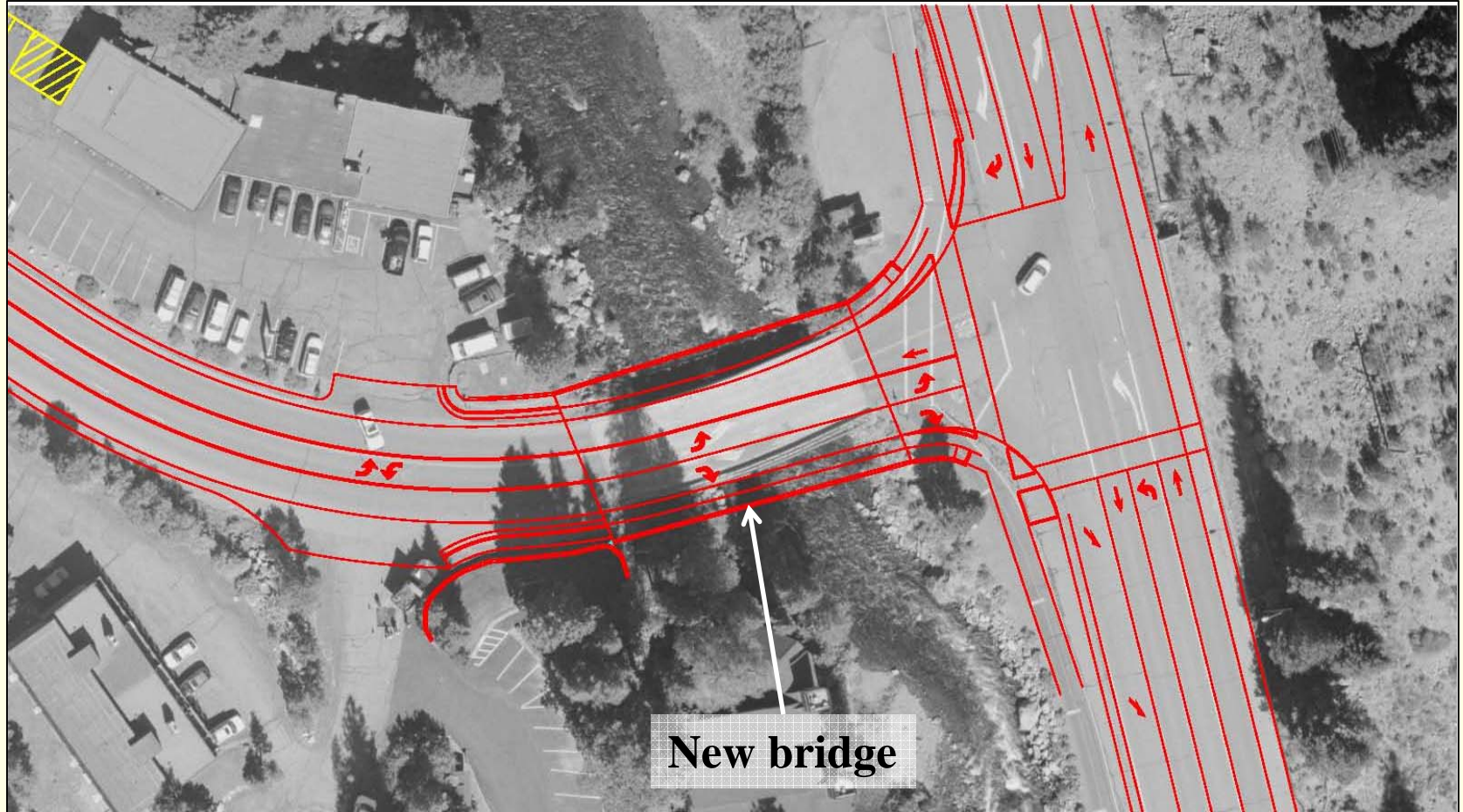
COUNTY OF PLACER

Department of Public Works



Project Details

Proposed Alignment



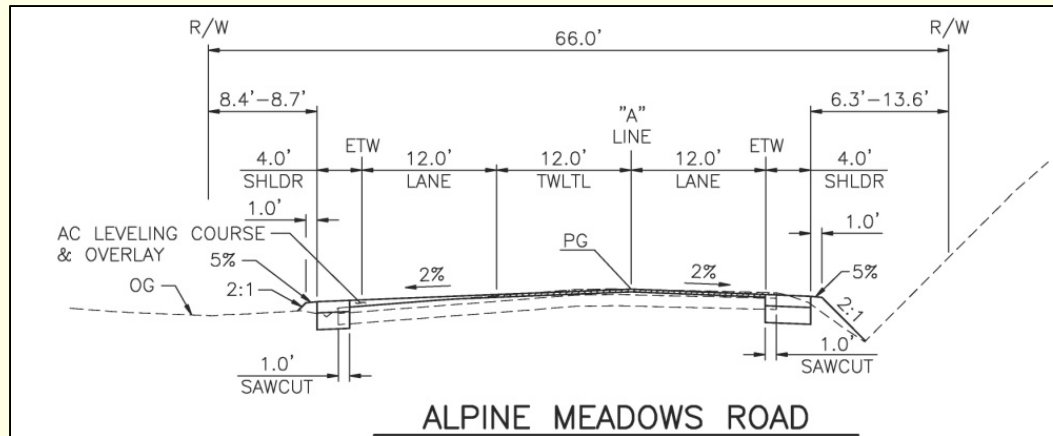
COUNTY OF PLACER

Department of Public Works



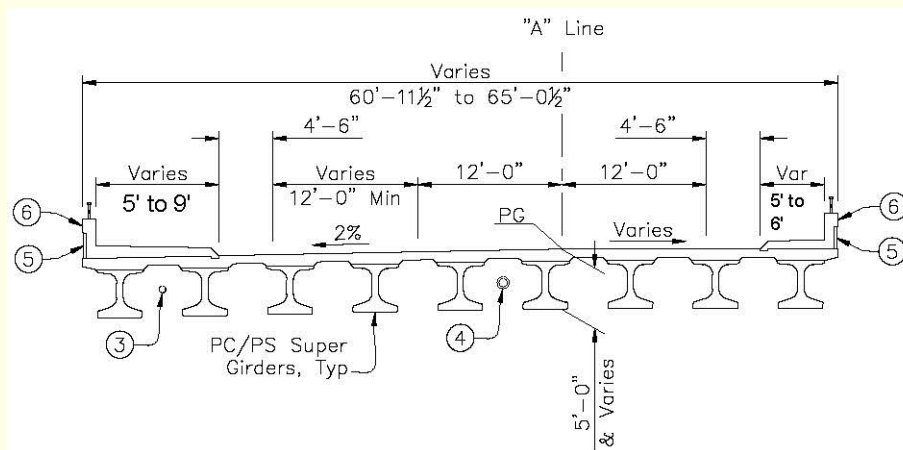
Project Details

Alpine Meadows Road Configuration



❖ Roadway:

3 Travel Lanes
4' Shoulders



❖ Bridge:

Clear Span
3 Travel Lanes
4.5' Shoulders
5'+ Sidewalks

COUNTY OF PLACER

Department of Public Works



Project Details

New Bridge Rendering



COUNTY OF PLACER

Department of Public Works



Project Details

New bridge Rendering w/ Old



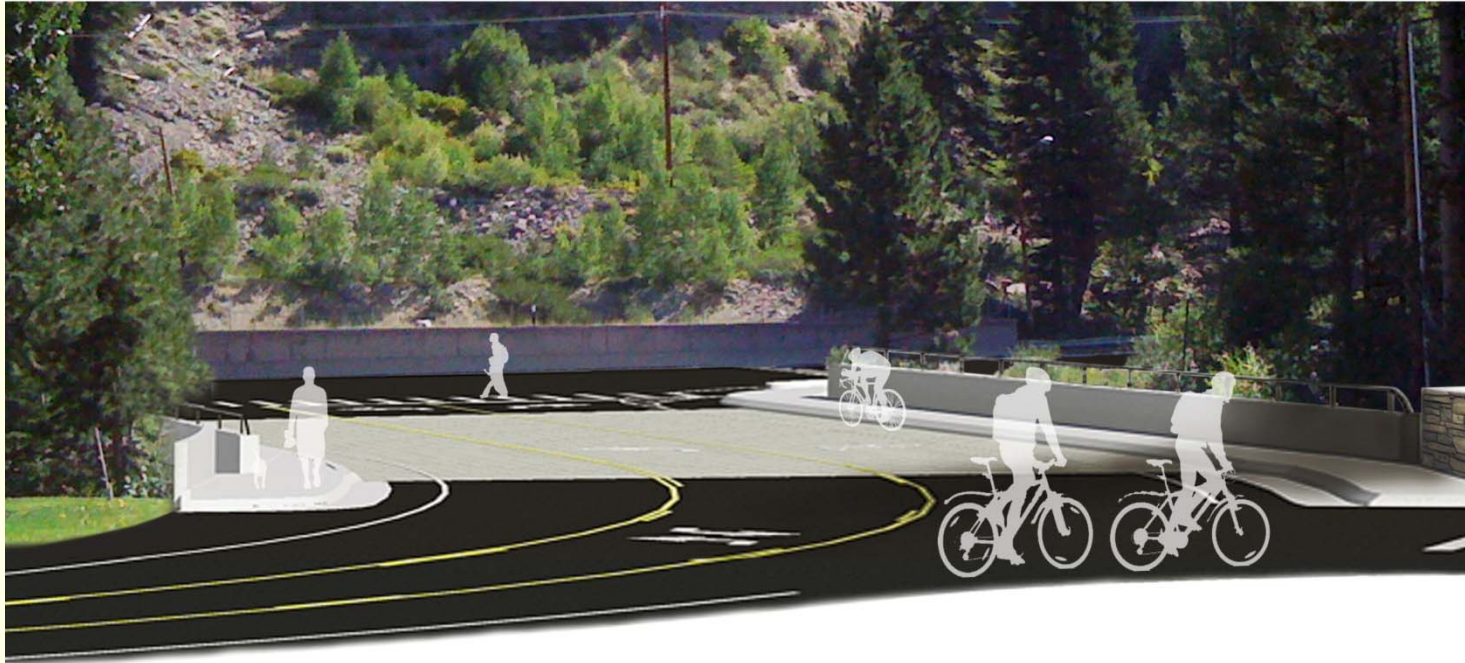
COUNTY OF PLACER

Department of Public Works



Project Details

New Bridge Rendering



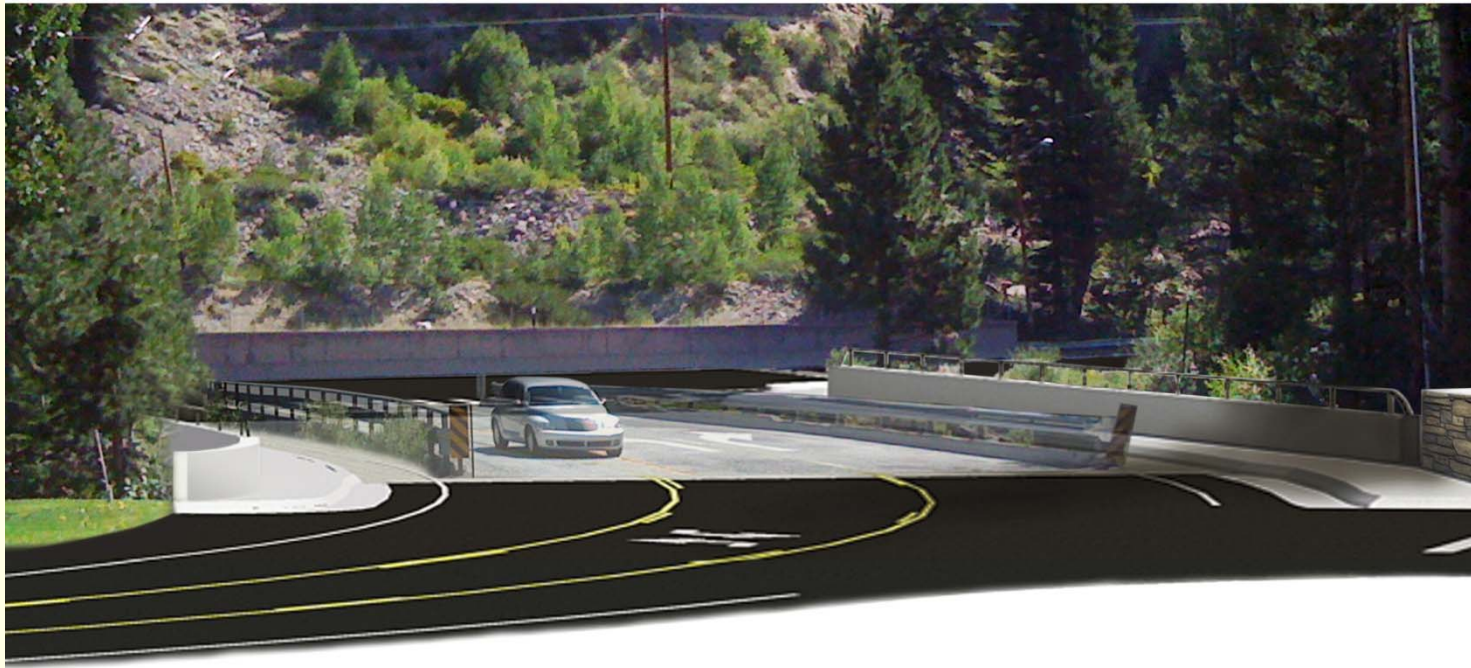
COUNTY OF PLACER

Department of Public Works



Project Details

New Bridge Rendering W/ Old



COUNTY OF PLACER

Department of Public Works



Project Details

Architecture / Aesthetics



COUNTY OF PLACER

Department of Public Works



Project Details

Architecture / Aesthetics



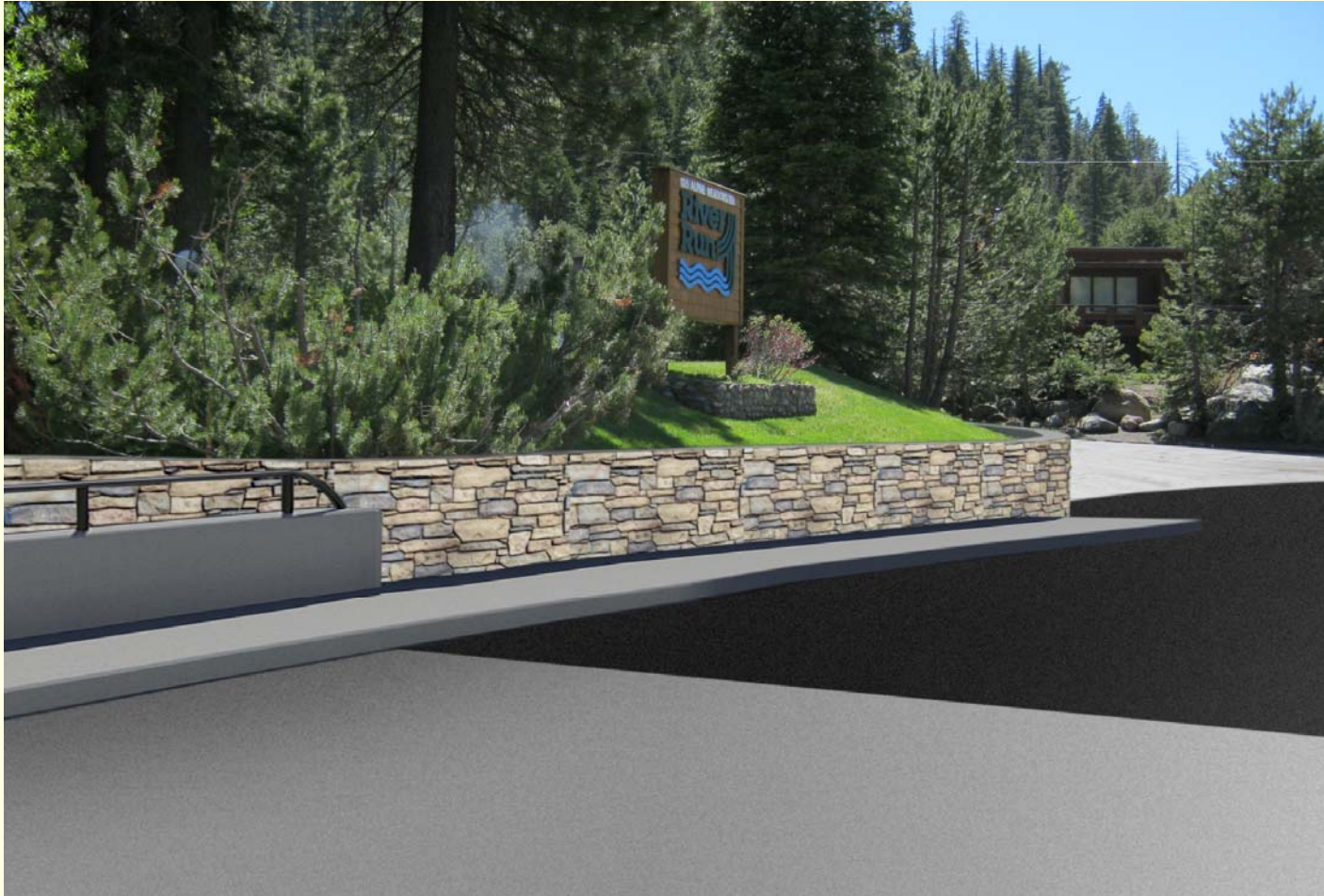
COUNTY OF PLACER

Department of Public Works



Project Details

Architecture / Aesthetics



COUNTY OF PLACER

Department of Public Works

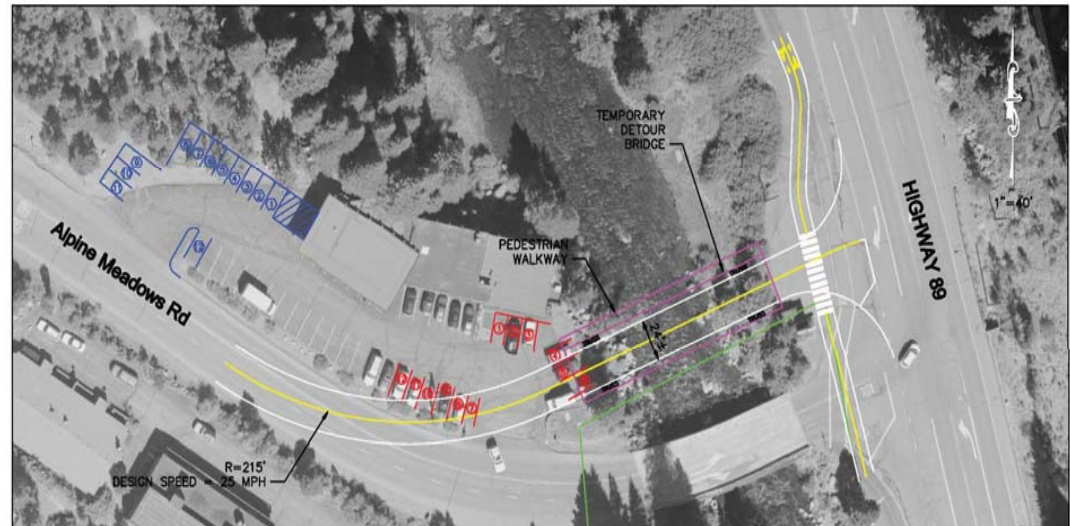


Project Details

Construction Method - Temporary Detour

❖ Single Construction Season

- Eliminates costs from stage construction and re-mobilization
- Provides both vehicle and bike/pedestrian access



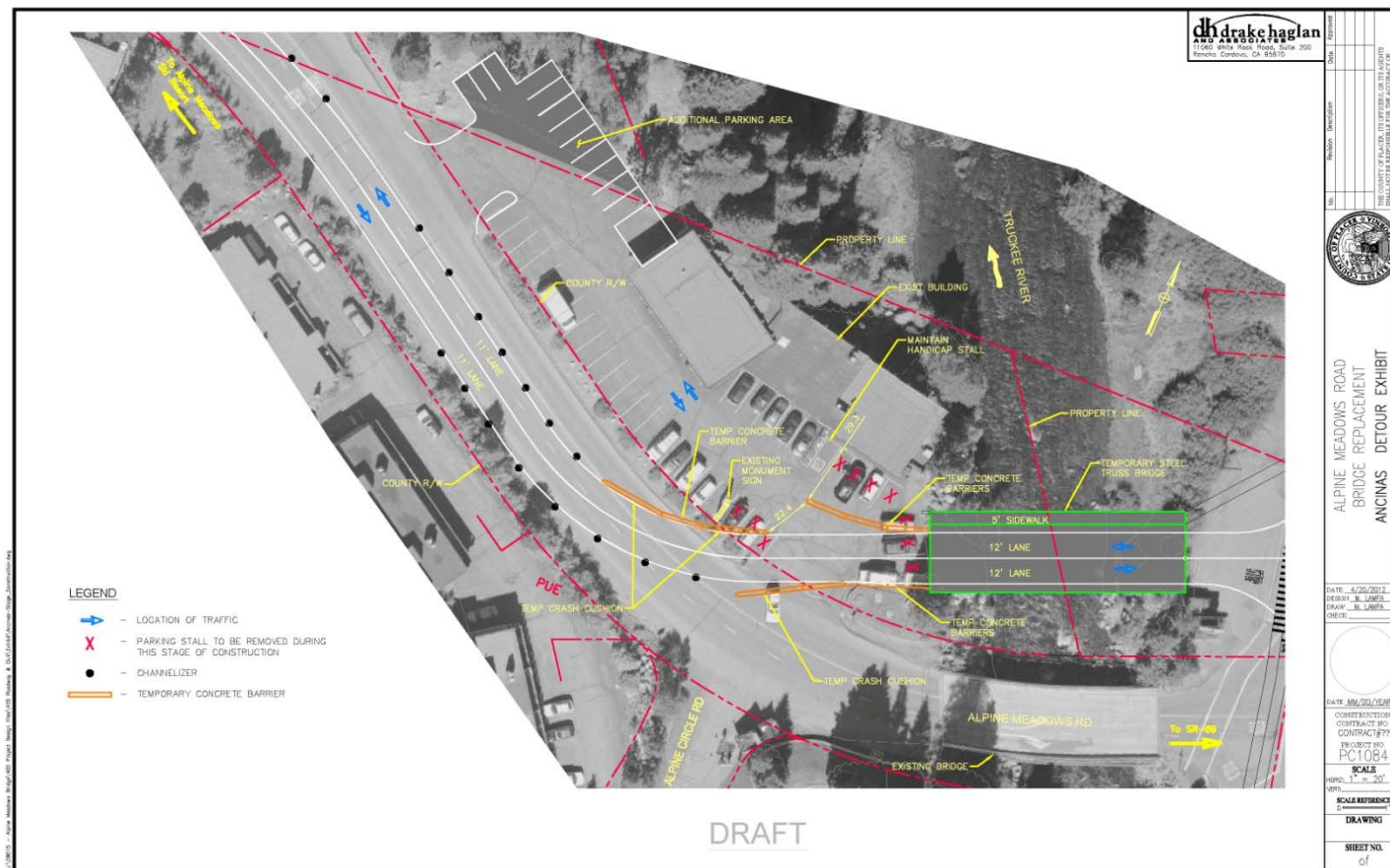
COUNTY OF PLACER

Department of Public Works



Project Details

Construction Method - Temporary Detour



COUNTY OF PLACER
Department of Public Works



Intersection Improvements SR 89/Alpine Meadows Rd

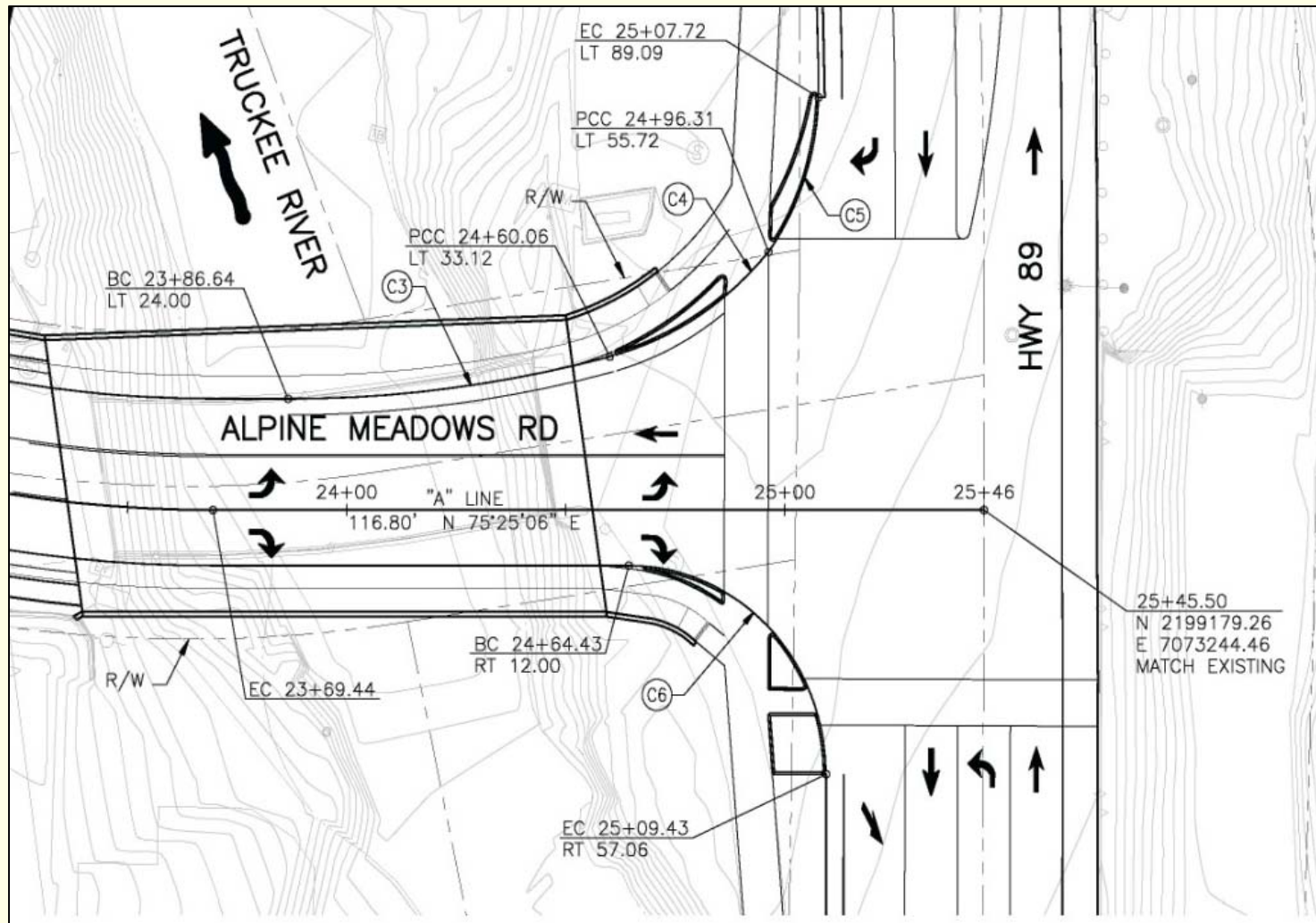
❖ Signalized Intersection Improvements:

- Last Summer Caltrans Specially Funded Projects lost the funding for this aspect of the project.
- Today Caltrans has potentially found us some money and we are prepared to move forward with the signal project if they come through.
- We should know within the next few weeks and continue moving forward with flexibility in the design.



Intersection Improvements

Signalized Intersection



COUNTY OF PLACER

Department of Public Works



PROJECT SCHEDULE

<i>PHASE</i>	<i>TENTATIVE DATES</i>	
	<i>BEGIN</i>	<i>COMPLETE</i>
PRELIMINARY DESIGN	SPRING '09	SUMMER '10
ENVIRONMENTAL	SUMMER '09	SPRING '11
FINAL DESIGN	WINTER '10	SUMMER '13
ROW	SUMMER '11	Summer '13
PERMITTING	SUMMER '11	FALL '12
CONSTRUCTION	SPRING '14	FALL '14

COUNTY OF PLACER

Department of Public Works

ALPINE MEADOWS ROAD BRIDGE PROJECT

